

MSMEC Pole Maps Update – Analysis Overview

Data analysis compiled through: Mar 3, 2024

Project completion total (entire burn area): **77% Completed**

Analysis Details

Completion rate increased 0.5% from last week due to:

- Inspection progress in Las Dispensas 1
- Slight construction progress in Tierra Monte, Mineral Hill, Mora North

*For areas without progress since last week, the previous week's map(s) are included in this report; see date in map title for reference.

Calculations/Queries

Poles left to be fixed = Status (*Staked*) AND Construction Needed (*New, Replaced, Retired*)

Poles fixed = Status (*Assessed Good, Inspected, Constructed, Set*)

% Poles fixed =

Poles Fixed (# poles fixed) ÷ Status (*Assessed Good, Staked, Inspected, Constructed, Set*)

DATA DICTIONARY/DEFINITIONS

STATUS:

In the Fire Zone = Poles were selected based on the Fire boundary

Assessed = Surveyors went out and Assessed if the poles were good or bad

Assessed Good = Stakers assessed the poles and they were good

Staked = The Poles were designed and are waiting to be constructed

Pole Set = Contractors Set the pole but haven't strung the wire

Constructed = The contractor set the pole with all the assemblies and wire on it

Inspected = Nathan or Rick or someone from T&D inspected the contractor's work

CONSTRUCTION NEEDED:

New = New poles & assemblies in a new spot

Replaced = Replace the existing pole and assemblies where existing pole is located

Retired = Remove pole completely (and do NOT replace)

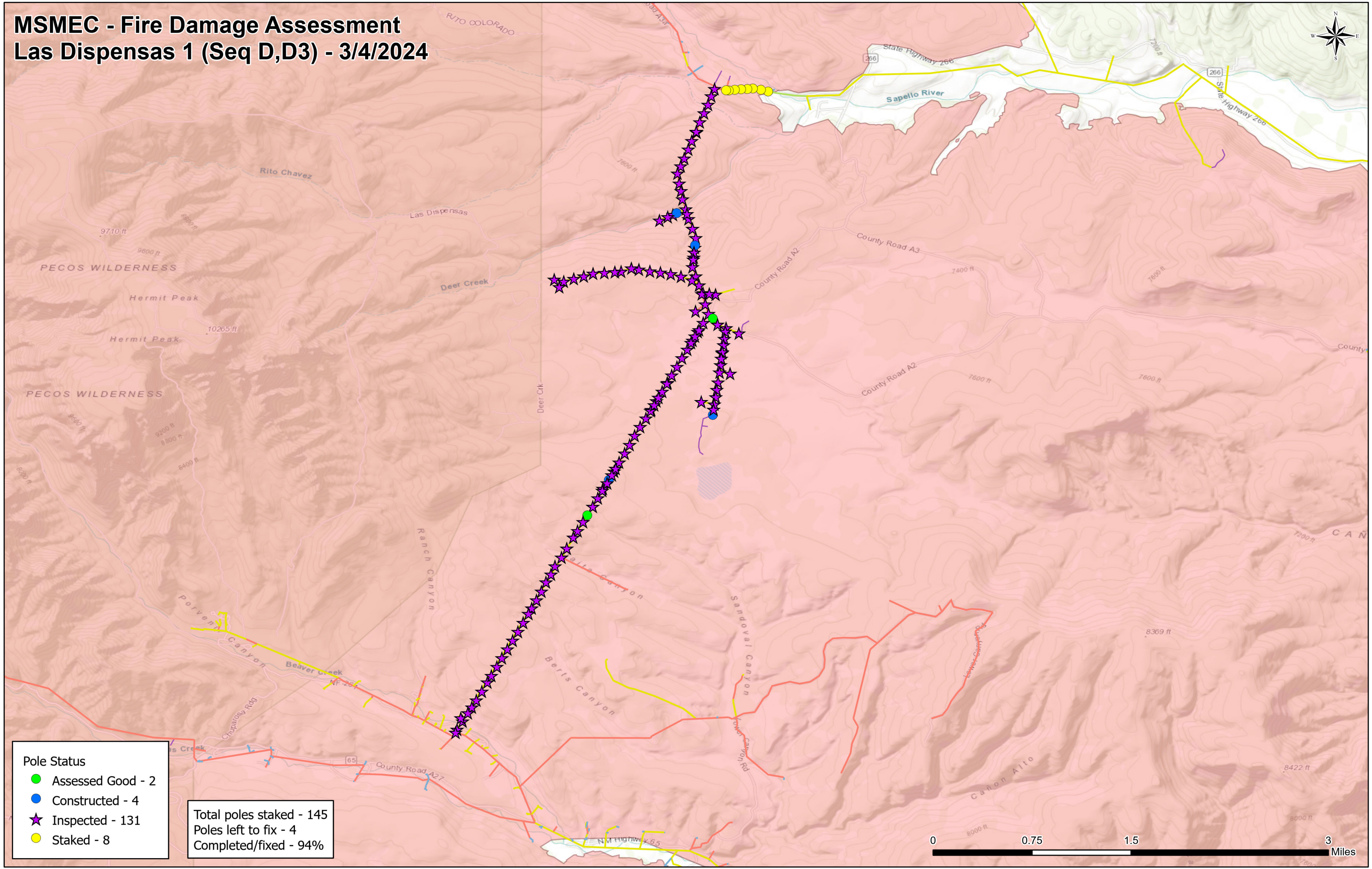
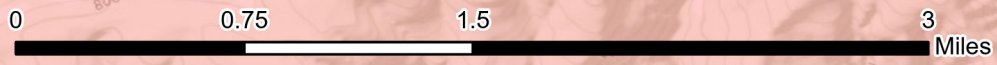
MSMEC - Fire Damage Assessment
Las Dispensas 1 (Seq D,D3) - 3/4/2024



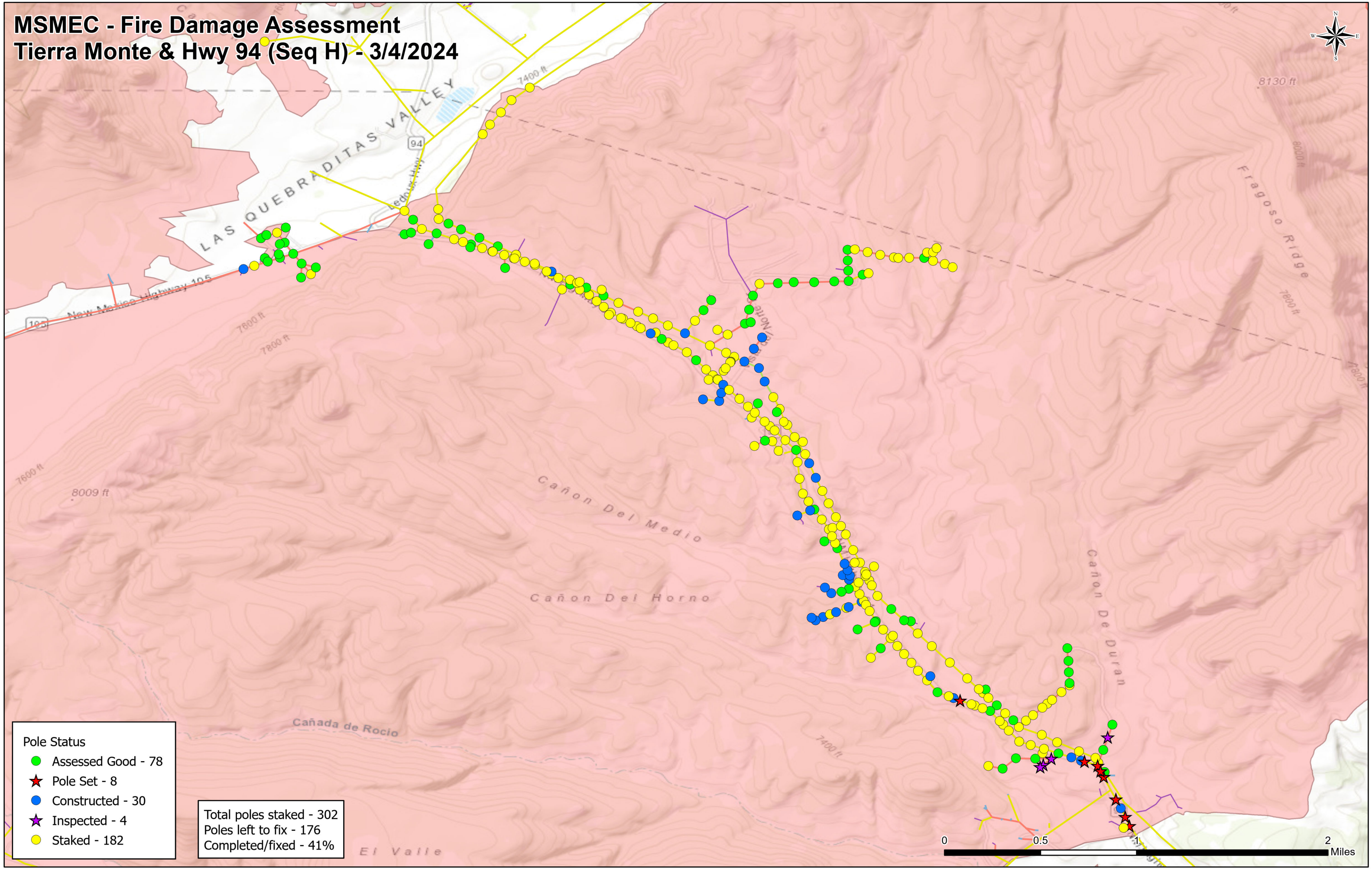
Pole Status

- Assessed Good - 2
- Constructed - 4
- Inspected - 131
- Staked - 8

Total poles staked - 145
Poles left to fix - 4
Completed/fixed - 94%



**MSMEC - Fire Damage Assessment
Tierra Monte & Hwy 94 (Seq H) - 3/4/2024**



Pole Status

- Assessed Good - 78
- Pole Set - 8
- Constructed - 30
- Inspected - 4
- Staked - 182

Total poles staked - 302
Poles left to fix - 176
Completed/fixed - 41%

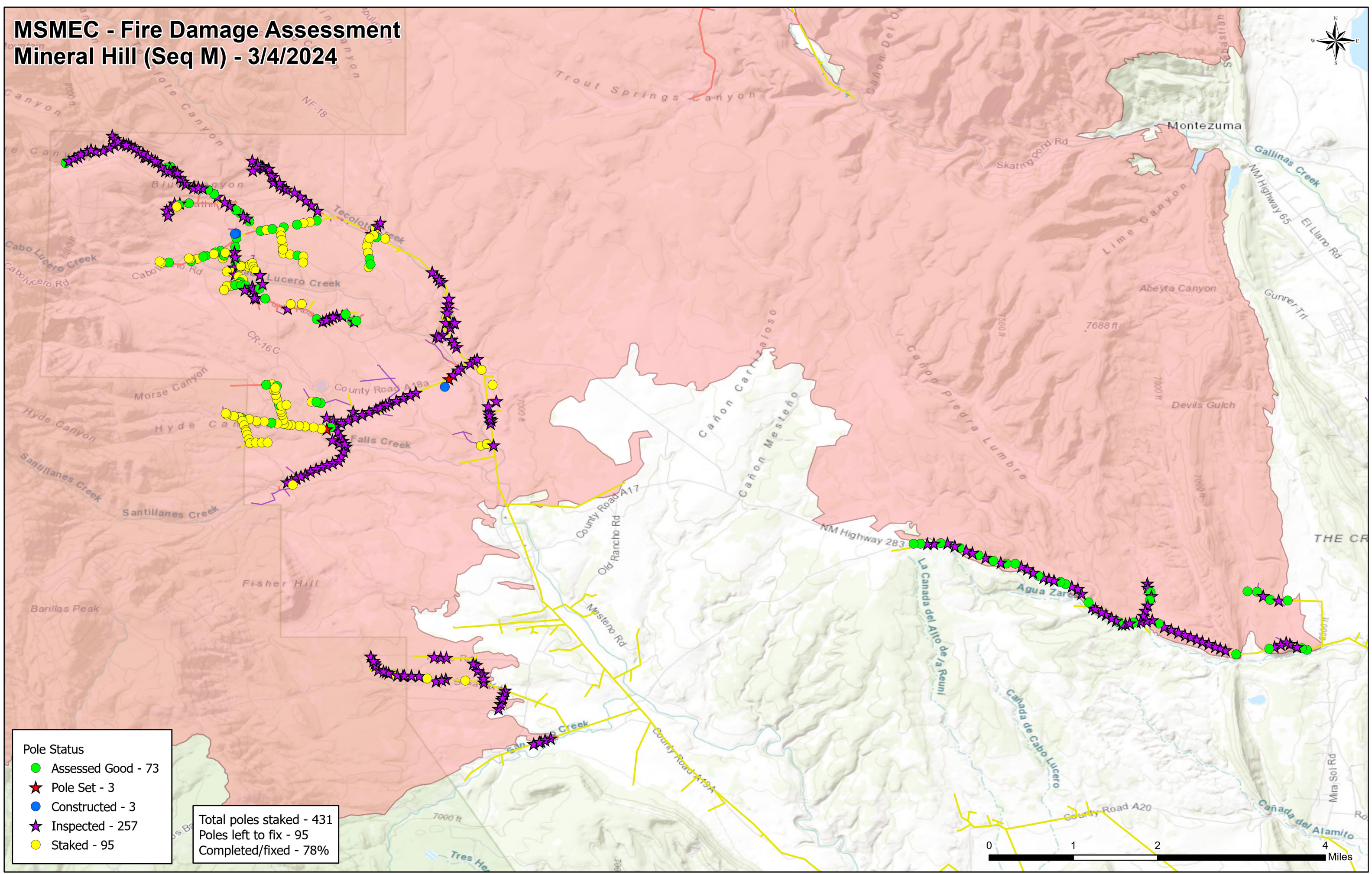
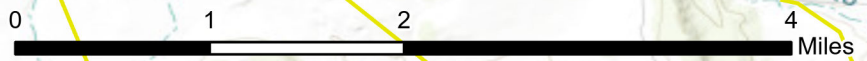


MSMEC - Fire Damage Assessment
Mineral Hill (Seq M) - 3/4/2024

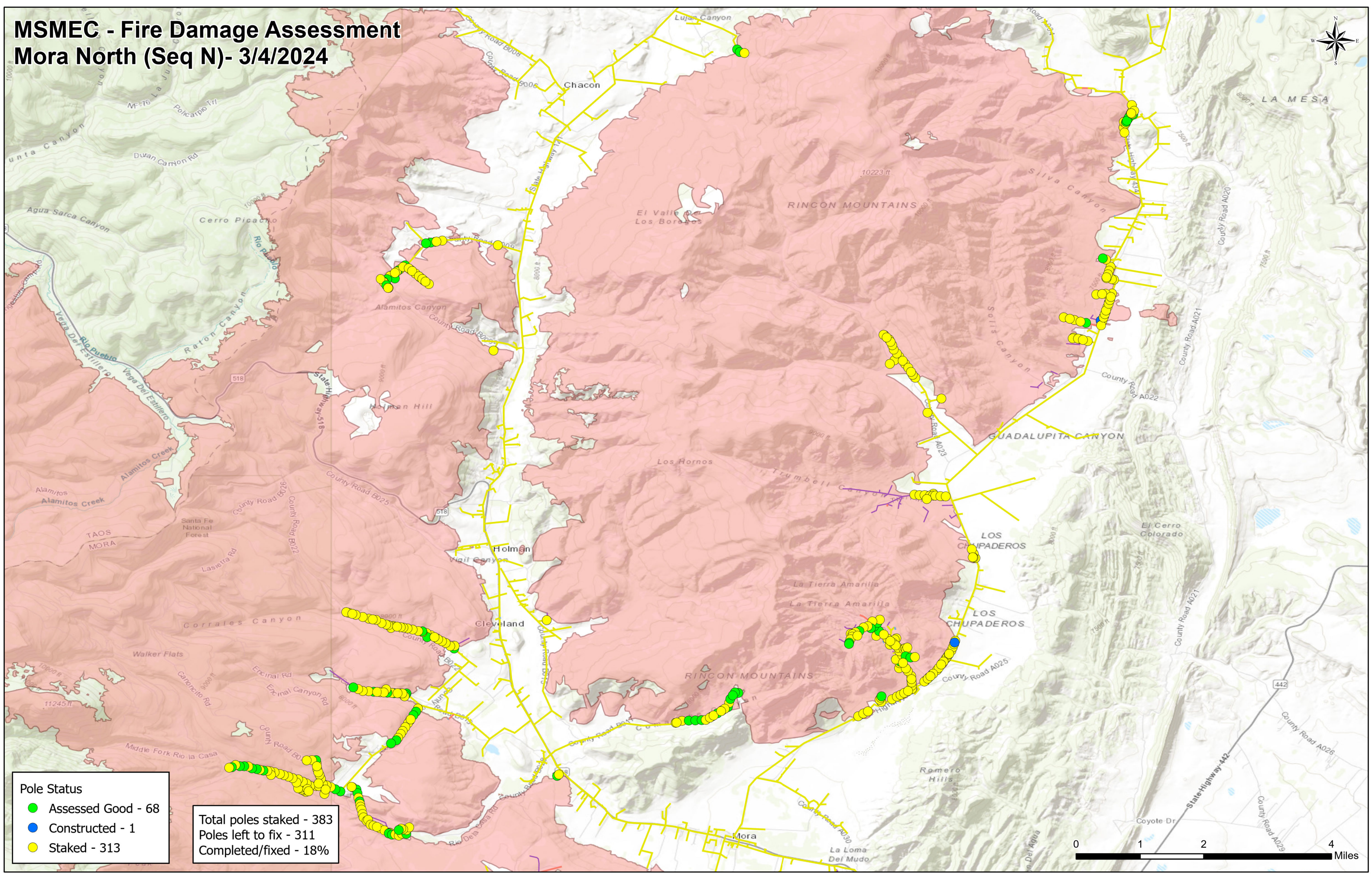


- Pole Status
- Assessed Good - 73
 - Pole Set - 3
 - Constructed - 3
 - Inspected - 257
 - Staked - 95

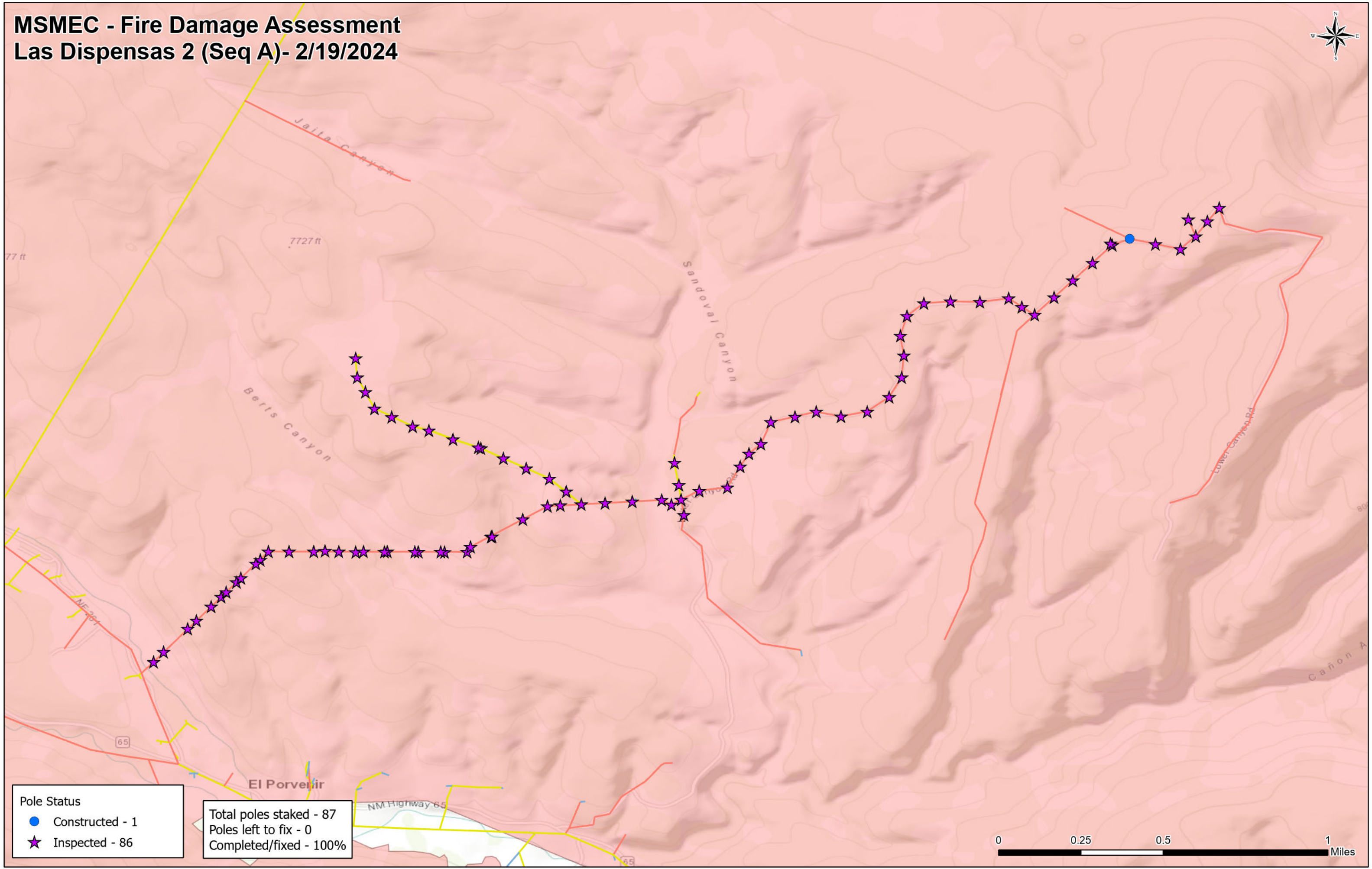
Total poles staked - 431
Poles left to fix - 95
Completed/fixed - 78%



MSMEC - Fire Damage Assessment
Mora North (Seq N)- 3/4/2024



MSMEC - Fire Damage Assessment
Las Dispensas 2 (Seq A)- 2/19/2024

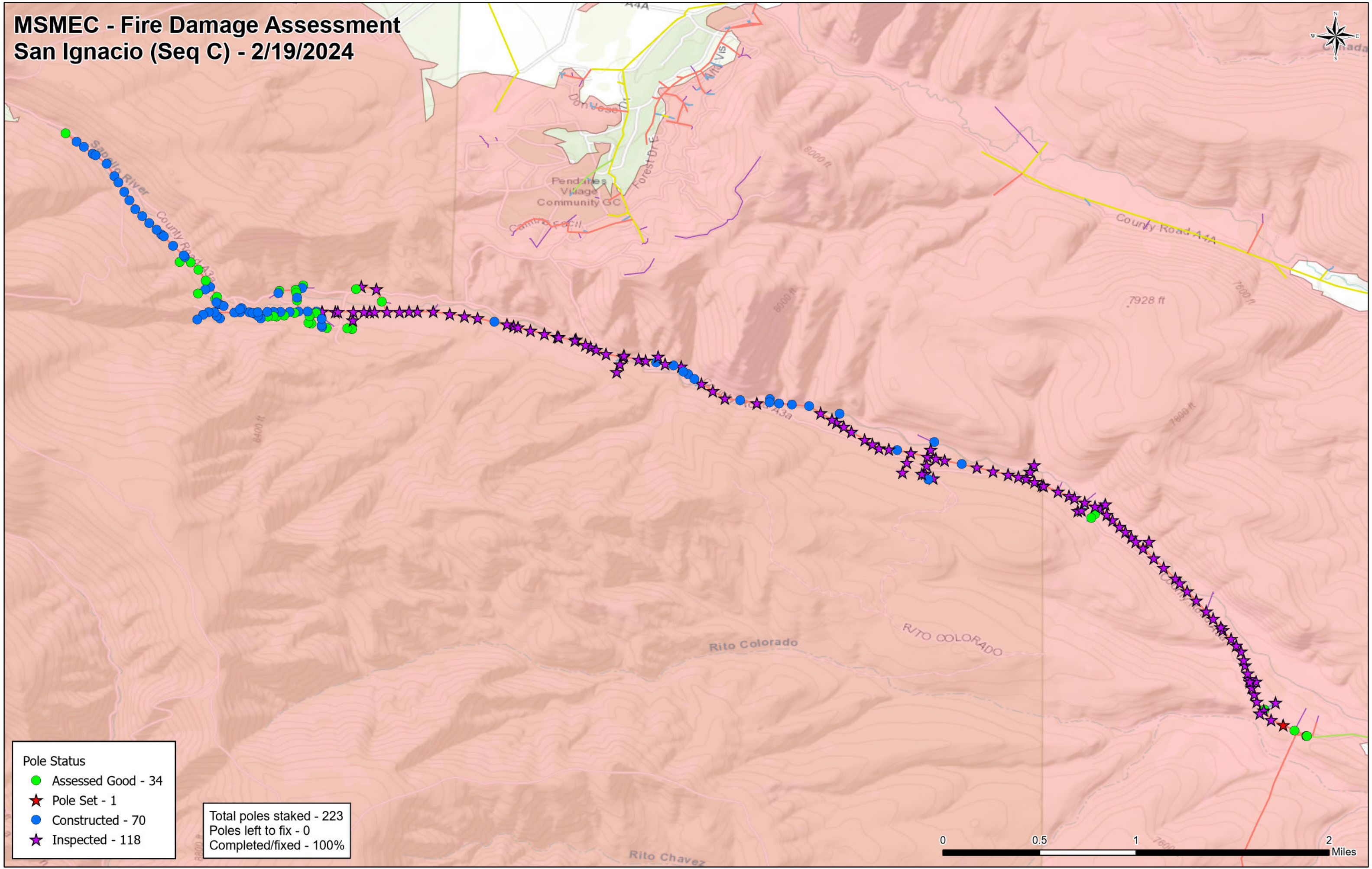
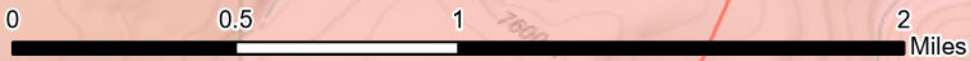


MSMEC - Fire Damage Assessment
San Ignacio (Seq C) - 2/19/2024

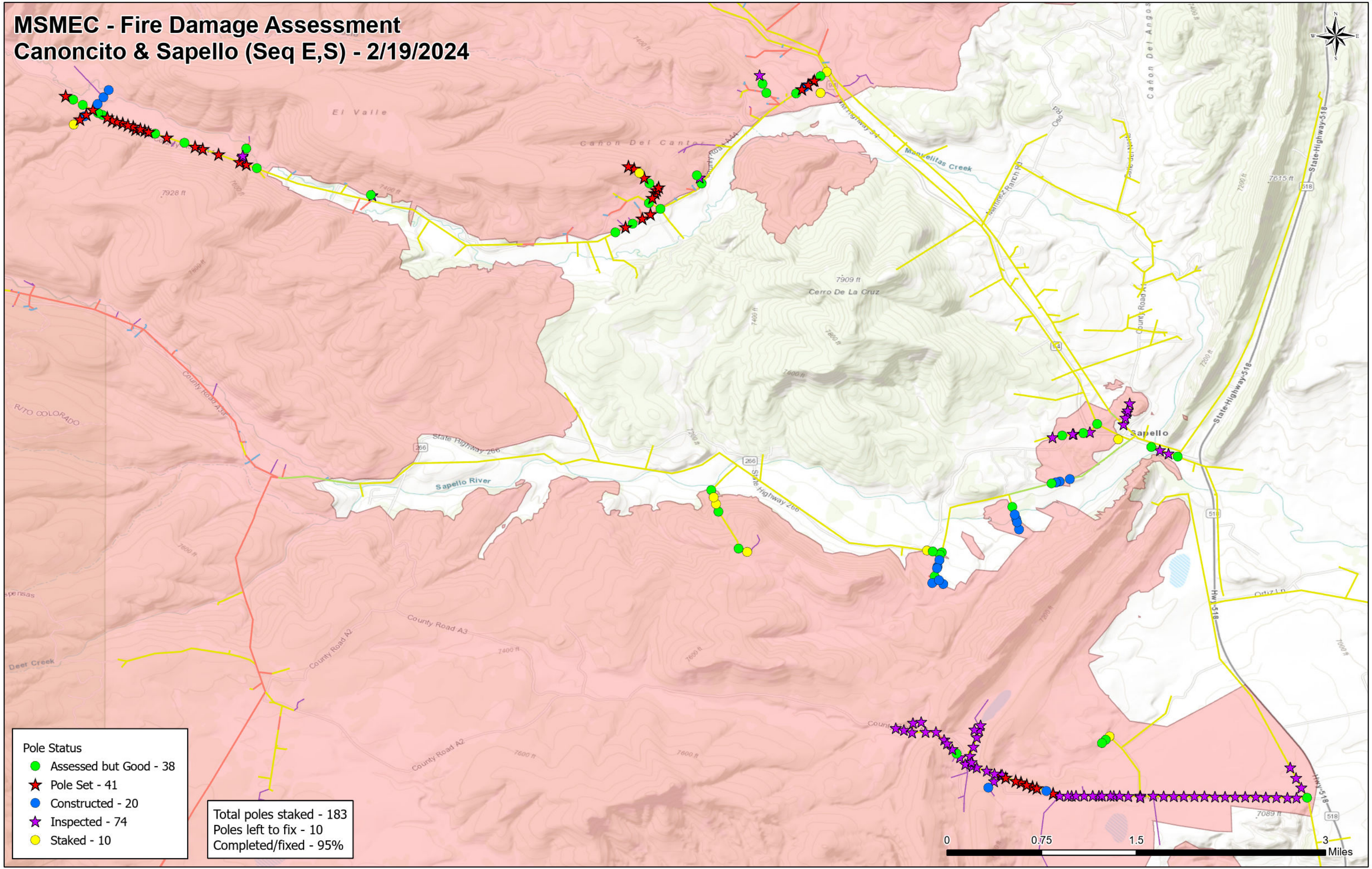


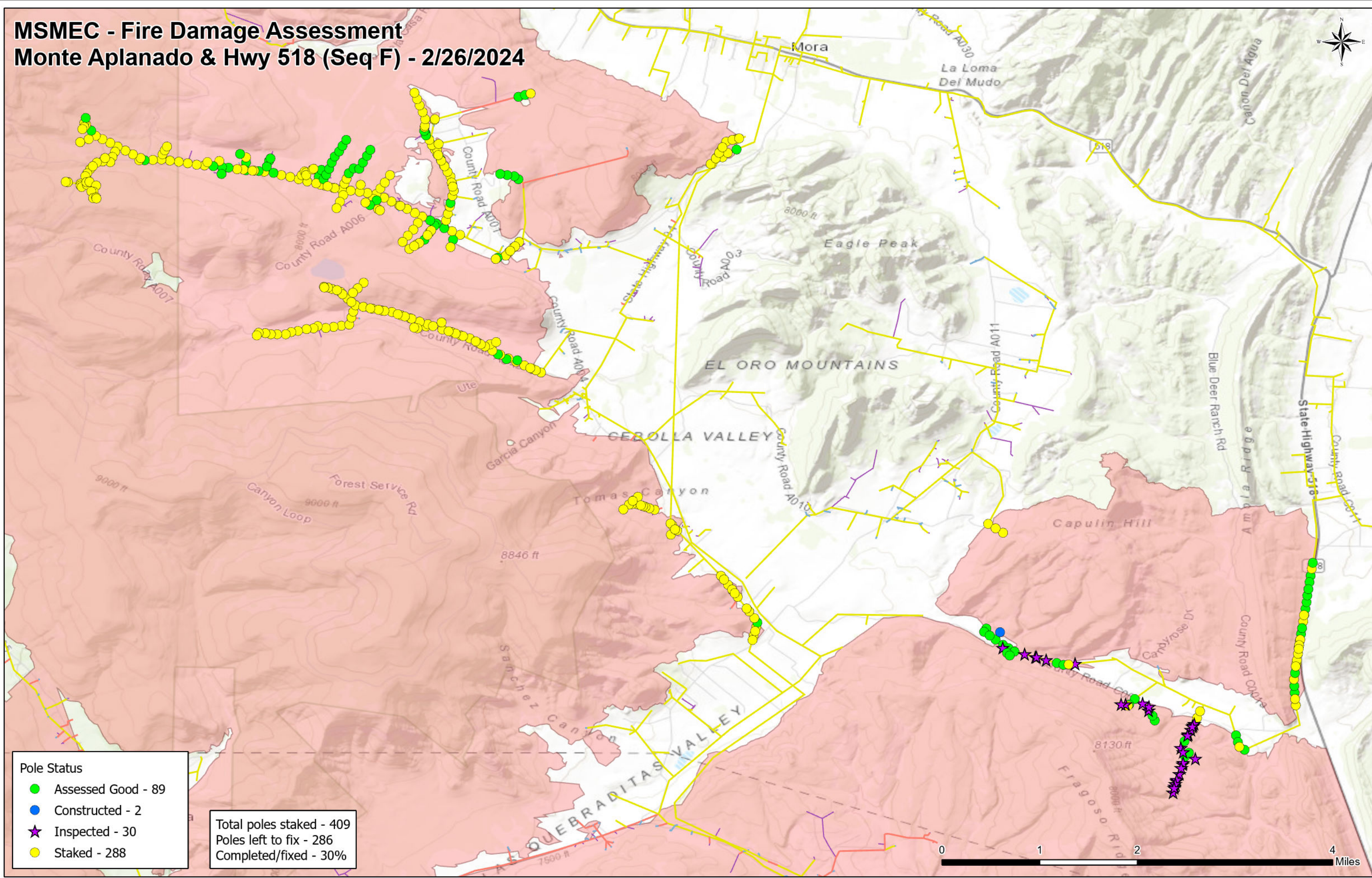
- Pole Status**
- Assessed Good - 34
 - Pole Set - 1
 - Constructed - 70
 - Inspected - 118

Total poles staked - 223
Poles left to fix - 0
Completed/fixed - 100%

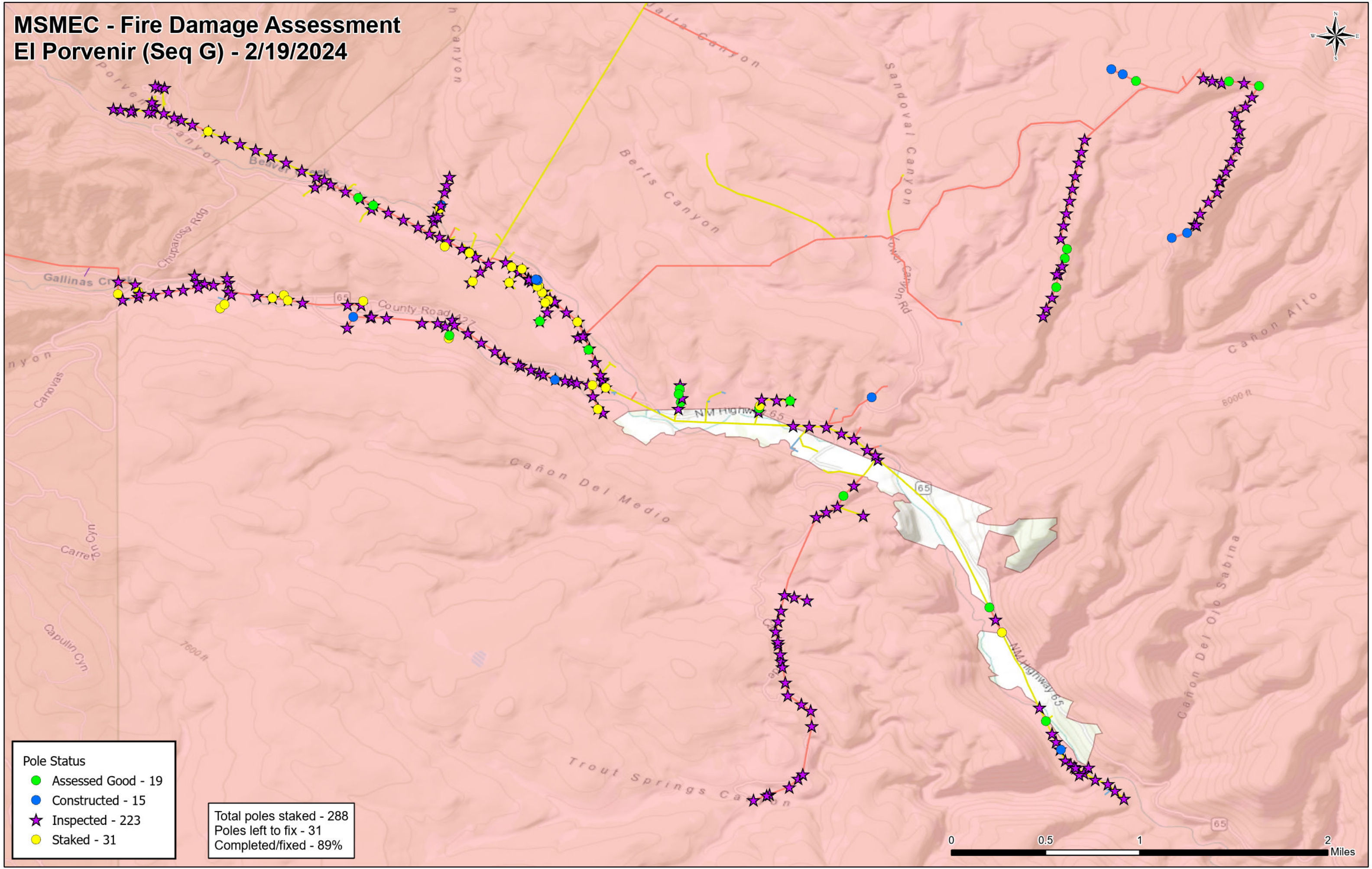


MSMEC - Fire Damage Assessment
Canoncito & Sapello (Seq E,S) - 2/19/2024





MSMEC - Fire Damage Assessment
El Porvenir (Seq G) - 2/19/2024

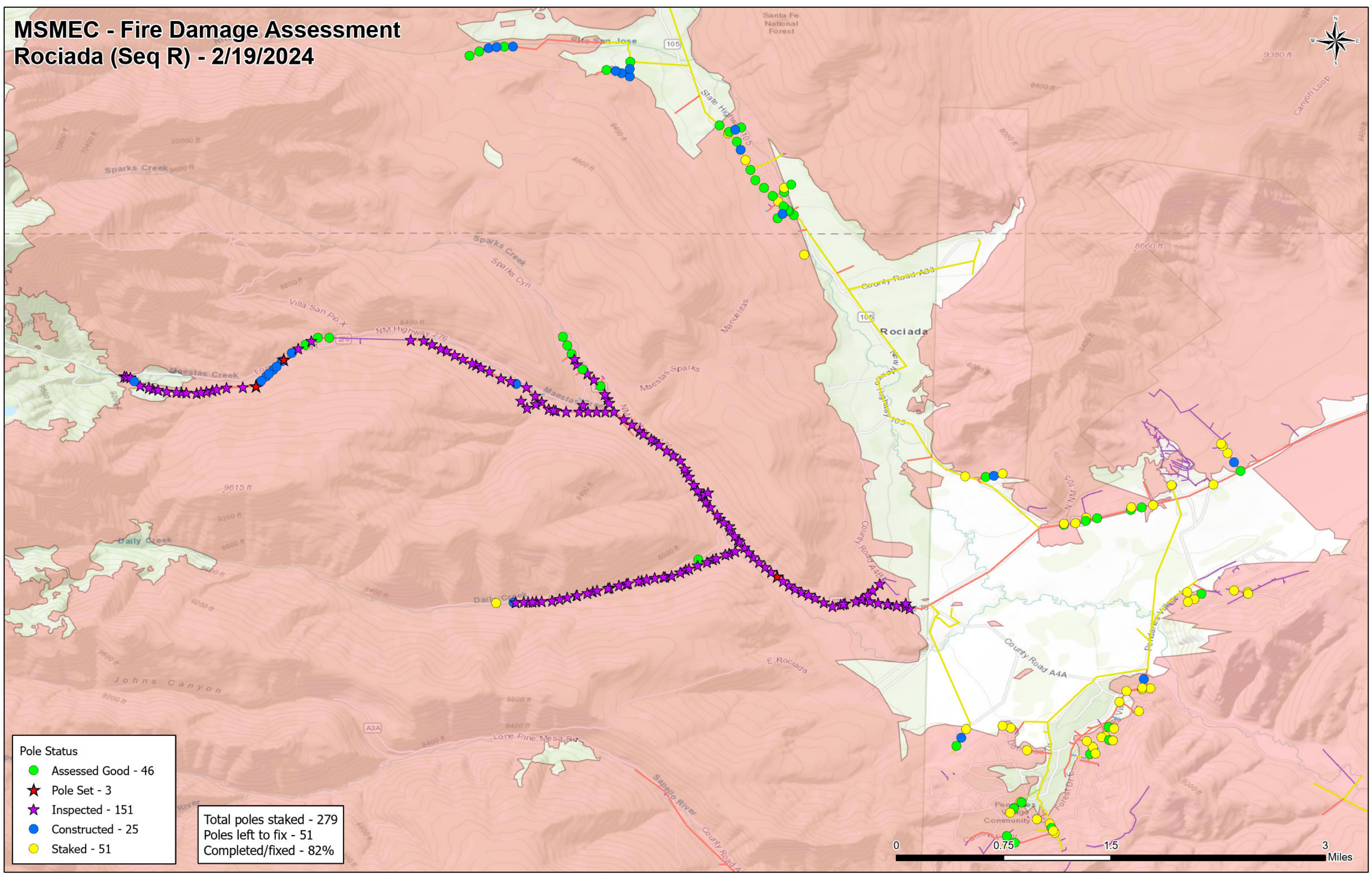


- Pole Status**
- Assessed Good - 19
 - Constructed - 15
 - ★ Inspected - 223
 - Staked - 31

Total poles staked - 288
Poles left to fix - 31
Completed/fixed - 89%



MSMEC - Fire Damage Assessment
Rociada (Seq R) - 2/19/2024



Pole Status

- Assessed Good - 46
- Pole Set - 3
- Inspected - 151
- Constructed - 25
- Staked - 51

Total poles staked - 279
Poles left to fix - 51
Completed/fixed - 82%